

 **Walt Disney's Comics and Stories – Vol. 14 No. 11**
(August 1952)

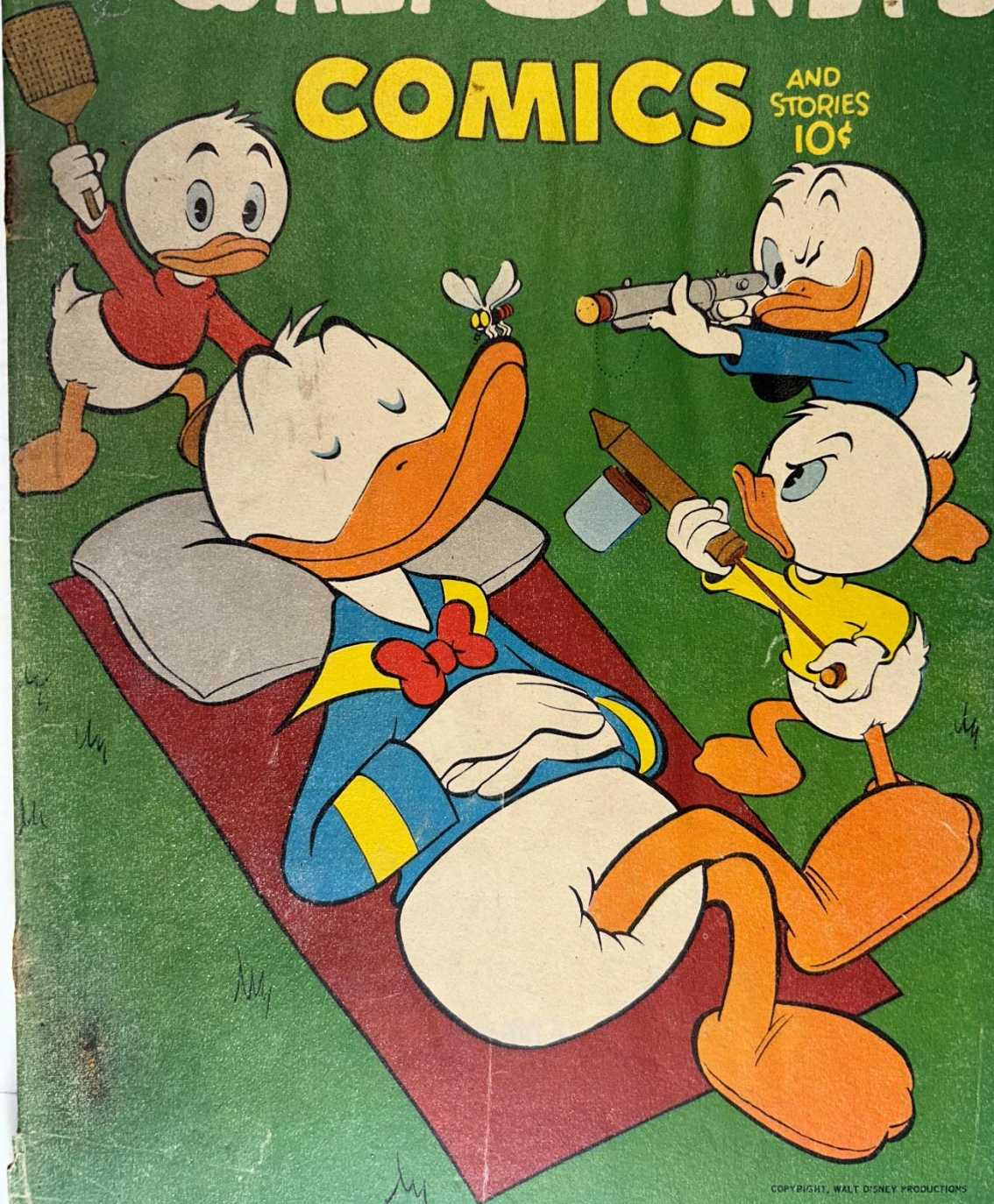
Evaluation Date: April 3, 2026

DELL
COMIC

AUGUST
NO. 167

WALT DISNEY'S COMICS

AND
STORIES
10¢



COPYRIGHT, WALT DISNEY PRODUCTIONS

A 52 PAGE COMIC MAGAZINE

SUMMARY OF OBSERVATIONS

This comic retains the front cover, back cover, centerfold, and all photographed interior pages. Overall presentation is mixed. The front cover shows strong remaining color and recognizable artwork, but is affected by **significant spine-edge deterioration**. Interior pages are complete and readable with consistent age-related toning. The spine remains continuous but shows **material loss and heavy wear at the staple areas**.

Condition issues are concentrated at the **spine and staple zones**. The front cover exhibits **substantial paper loss at the spine edge**, exposing layered fibers and underlying stock. Both staples are present but show **heavy oxidation with surrounding paper breakdown**. Interior pages show **darkened fore-edges** consistent across multiple pages. The centerfold remains attached but shows stress at the binding points. The brittleness test image shows a single page flexed with a smooth arc and no visible fiber fracture on the lifted page.

(ILIAR evaluated and **not triggered** for this issue.)

FRONT COVER — OBSERVATIONS

Walt Disney's Comics and Stories – Vol. 14 No. 11 (August 1952)

Photo Condition & Quality:

Image is sharp and evenly lit, showing the full cover with edges, corners, and spine visible. Resolution is sufficient to assess color, gloss loss, and spine damage.

Observations:

- Color saturation remains strong, particularly in the green background and character figures.
- Surface gloss appears reduced overall, with a matte appearance along worn areas.
- Along the **spine edge**, there is **pronounced paper loss**, with irregular cavities exposing layered paper fibers.
- Individual loss areas measure approximately **8–15 mm vertically**, with depth sufficient to expose inner layers.
- Spine edge shows fraying and breakdown rather than simple cracking.
- Corner rounding is moderate, approximately **5–8 mm** inward.
- No writing observed on the front cover.

Overall Impression:

The front cover retains visual appeal but is **structurally compromised at the spine edge** due to paper loss.

BACK COVER — OBSERVATIONS

Walt Disney's Comics and Stories – Vol. 14 No. 11 (August 1952)

Photo Condition & Quality:

Image is clear and evenly lit, fully framed with edges and corners visible.



FREE

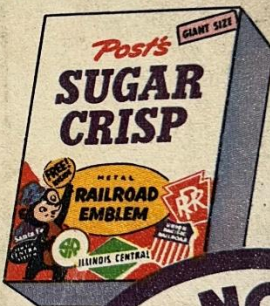
OFFICIAL RAILROAD EMBLEMS



One emblem packed free in every special package of **Post's SUGAR CRISP**



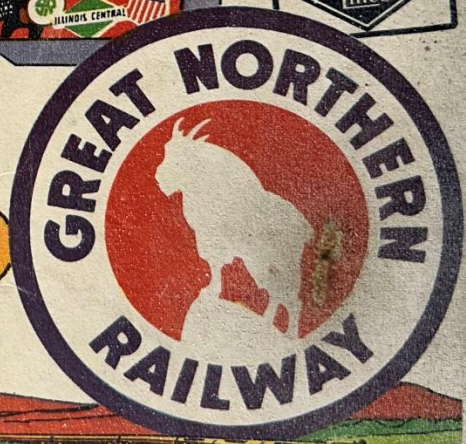
Kids—you'll want all of these big, solid metal emblems. Put them on your bike, wagon, or electric train! Hang them in your room! Complete set of 28 gives you the trademarks of America's leading railroads. Start your collection now! Get Sugar Crisp at your grocer's tomorrow!



For Golden Honey Flavor
it's *Post's*
SUGAR CRISP



ALL 28 EMBLEMS THIS SIZE →



A Product of General Foods

Observations:

- Uniform age toning across the back cover.
- Paper surface appears flat with no cockling or rippling.
- No visible writing or markings observed.
- Edge wear along the bottom and spine edges affects approximately **5–10 mm intermittently**.
- Corners show rounding of approximately **4–6 mm** inward.
- No paper loss observed on the back cover.

Overall Impression:

The back cover remains intact with **moderate handling wear only**.

INTERIOR PAGES — OBSERVATIONS

Walt Disney's Comics and Stories – Vol. 14 No. 11 (August 1952)

Photo Condition & Quality:

Images are sharp and evenly lit, showing full interior pages with margins visible.





Observations:

- Interior pages exhibit **tan to light-tan paper coloration**.
- **Fore-edge darkening** is visible across multiple pages, extending approximately **6–12 mm inward** from the edge.
- Artwork remains legible with stable color and intact panel borders.
- No interior tears or paper loss observed on photographed pages.
- Minor corner bends visible on some pages, approximately **3–6 mm** inward.
- No interior writing observed.

Overall Impression:

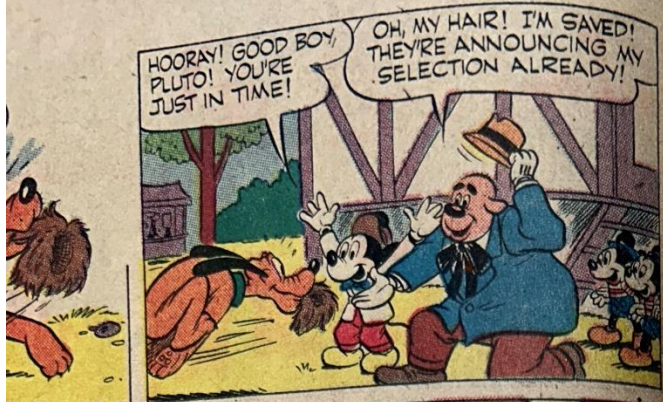
Interior pages are **complete and readable**, with **consistent fore-edge darkening**.

CENTERFOLD — OBSERVATIONS

Walt Disney's Comics and Stories – Vol. 14 No. 11 (August 1952)

Photo Condition & Quality:

Image is in focus and evenly lit, clearly showing both pages and the central gutter.

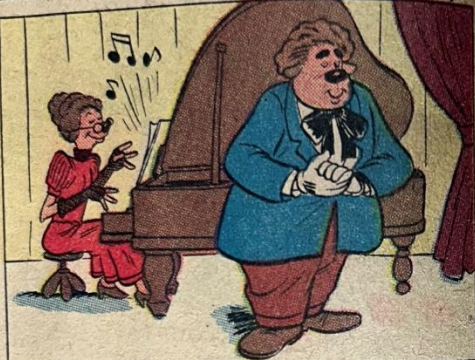


HOORAY! GOOD BOY, PLUTO! YOU'RE JUST IN TIME!

OH, MY HAIR! I'M SAVED! THEY'RE ANNOUNCING MY SELECTION ALREADY!



AFTER WORMWOOD'S TRUMPETING SOLO!



WELL, HE TOLD ME IT WOULD BE A SOLO!



SEE! I KNEW THERE'D BE FIREWORKS! IT NEVER FAILS WITH PLUTO ALONG!!

WALT DISNEY'S Little HIAWAW



DID YOU HEAR-UM GOOD NEWS, FATHER? THERE'S GOING TO BE A SUMMER SCHOOL THIS SUMMER... START-UM TODAY!

REG. COPR., 1954, BY WORLD



WE WILL SEE THAT LITTLE HIAWATHA ATTENDS! IT WILL KEEP-UM HIM OUT OF MISCHIEF!

WHERE IS HE?



HE RUN-UM AWAY LIKE SCARED RABBIT!

ME LIKE TO BE RABBIT RIGHT NOW!

Observations:

- Both staple positions visible.
- Surrounding paper shows **stress and minor tearing at the staple locations**, without full detachment.
- Fold line shows compression and localized wear.
- Centerfold remains attached.

Overall Impression:

The centerfold is **attached but stressed at the binding points**.

SPINE — OBSERVATIONS

Walt Disney's Comics and Stories – Vol. 14 No. 11 (August 1952)

Photo Condition & Quality:

Image is sharp and well lit, showing the full spine length clearly.



Observations:

- Spine remains continuous but heavily worn.
- **Material loss at staple zones** corresponds with front-cover spine damage.
- Fraying and layered paper exposure visible; no clean spine splits observed.

Overall Impression:

The spine is **structurally weakened**, with **significant material loss at binding areas**.

UPPER STAPLE — OBSERVATIONS

Walt Disney's Comics and Stories – Vol. 14 No. 11 (August 1952)

Photo Condition & Quality:

Macro image is sharp and evenly lit.



Observations:

- Metal staple present but heavily oxidized.
- Rust accumulation visible on the staple surface.
- Surrounding paper shows breakdown and fiber loss extending approximately **3–5 mm**.

Overall Impression:

Upper staple shows **heavy oxidation with surrounding paper deterioration**.

LOWER STAPLE — OBSERVATIONS

Walt Disney's Comics and Stories – Vol. 14 No. 11 (August 1952)

Photo Condition & Quality:

Macro image is clear and properly framed.



Observations:

- Metal staple present with oxidation comparable to the upper staple.
- Surrounding paper shows similar breakdown and fraying, approximately **3–5 mm** outward.

Overall Impression:

Lower staple shows **heavy oxidation with surrounding paper deterioration.**

BRITTLENESS TEST — OBSERVATIONS

Walt Disney's Comics and Stories – Vol. 14 No. 11 (August 1952)

Photo Condition & Quality:

Image shows a single interior page lifted above flat underlying pages.



Observations (confined to the lifted page):

- Page bends in a **smooth, shallow arc**.
- No visible fiber fracture, splitting, or flaking along the bend line.
- Paper surface remains continuous at the point of flex.

Overall Impression:

The tested page demonstrates **retained flexibility** and does **not exhibit brittle behavior**.